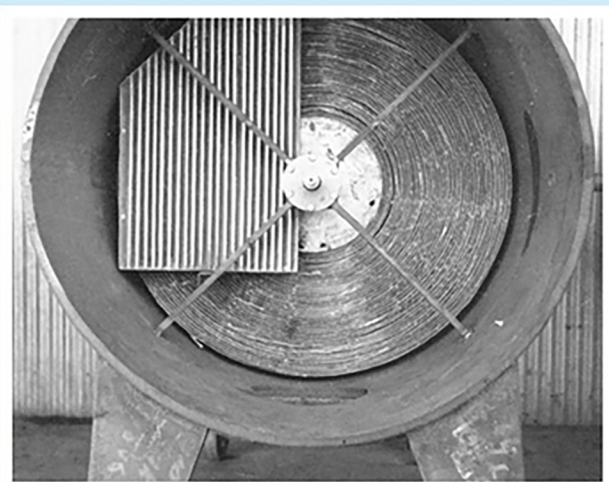




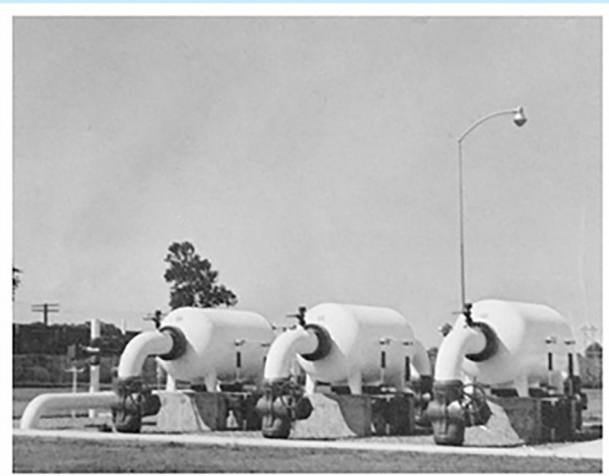
GAS SEPARATOR - SCRUBBER



Battery of KingTool Gas Separator-Scrubbers with connections located to fit existing headers and valves.



View of internal components showing oil bath bundle and a portion of one of the vane mist extractors.



KingTool Gas Separator-Scrubbers showing installation of standard units at compressor station.

WHY EXPERIENCE DUST SCRUBBERS

THE KINGTOOL IS

After over 40 years of varied applications with users through out the world, the KINGTOOL GAS SEPARATOR-SCRUBBER still stands at the top of the many types of gas cleaners on the market today. The true test of value is the test of time, and the KINGTOOL GAS SEPARATOR-SCRUBBER meets this qualification when it is considered that the first unit ever built is still in operation—giving the same fine service for which it was originally designed. Another test of value is the ability to withstand the onslaught of competitive types of equipment. Here again the KINGTOOL GAS SEPARATOR-SCRUBBER is still one of the most outstanding pieces of equipment available to the industry from the standpoint of (1) high efficiency in both liquid and dust removal, (2) a constant low pressure drop, and (3) minimal maintenance service - no filter elements to purchase, warehouse and change-out. These highlighted features are backed by the verification of exhaustive and extensive field tests and experiences by a multitude of the leading organizations in the gas business.

THIS IS HOW IT WORKS

First Section

The vessel of the KINGTOOL GAS SEPARATOR-SCRUBBER is divided into two main sections. The first section through which the gas passes is a liquid separator equipped with a large capacity mist extractor. The major portion of the liquid present in the gas stream tends to drop out at this point. If the liquid knock-out is of appreciable quantity, the unit can be fitted with suitable automatic trap or dump to control the level of the accumulated liquid.

Second Section

Rather than employing the predominantly used oil-mist principal of gas scrubbing (as in most typical oil bath units), dirt and other foreign matter are removed in the KINGTOOL GAS SEPARATOR-SCRUBBERS by contact with oil-wetted surfaces. The primary part of the second section is the scrubbing element which serves both to cleanse the gas of solid particles entrained therein and to increase the efficiency of the unit as a liquid

MENT? A LIQUID SEPARATOR AND A BBER IN A SINGLE COMPACT UNIT

L GAS SEPARATOR - SCRUBBER STILL READILY AVAILABLE

separator. This scrubbing element is rotated by means of an explosion-proof gearmotor through an oil bath, and the exposed surfaces of the element present an oil-wetted labyrinth through which the gas must flow and to which foreign matter will adhere. The rotation of the scrubbing drum through the bath provides a washing action on the exposed portion of the scrubbing element at all times. The highly effective scrubbing performance of the KINGTOOL GAS SEPARATOR-SCRUBBER is noted in the efficiency of removal of such light solids as *Iron Sulfide* and fine dust.

Another attractive feature of the second section of the separator-scrubber is an outlet mist extractor located on the downstream side of the scrubbing element. Designed to capture any oil that might be entrained in the gas stream after traveling through the scrubbing element, this mist extractor serves as an additional safeguard against excessive oil losses in the event maximum recommended capacities are exceeded.

LOOK AT THE ADVANTAGES!!

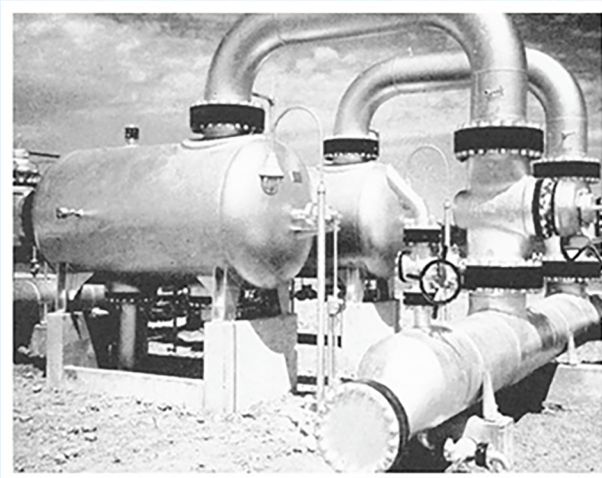
- 1) The design of the KINGTOOL GAS SEPARATOR-SCRUBBER is such that the demands of maintenance are at a minimum. It does not require daily checks or even monthly cleanouts. Simple routine maintenance assures long carefree service and eliminates the worry of non-scheduled costly shutdowns to change out dirty filter elements during heavy winter loading.
- 2) Also, consider the oil loss factor. When operated within the range of its maximum recommended load, there is no oil carry-over with a KINGTOOL GAS SEPARATOR-SCRUBBER. In fact, it can handle minor overloads with very insignificant losses. The efficiency of the KINGTOOL GAS SEPARATOR-SCRUBBER stands alone.
- 3) Also, it is not dependent upon the flow but remains stable from the smallest flow to the maximum condition encountered. Remember these advantages!! They are not mere statements but actual facts conclusively backed by years of service.

CUSTOM MADE FOR INDIVIDUAL REQUIREMENTS

While the internal design and operating principal of the separator-scrubber is standardized, the vessel itself is sized and fitted to meet the needs of the particular installation involved. Careful analysis and specialized attention are given to each application under consideration in order to recommend the most practical and economical solution for the conditions which will be encountered. KINGTOOL GAS SEPARATOR-SCRUBBERS ... remember that name when confronted with a gas clean-up problem. Time has proven that it is the right equipment for the job!!! Additional information or a detailed quotation on KINGTOOL GAS SEPARATOR-SCRUBBERS will be gladly furnished on request.

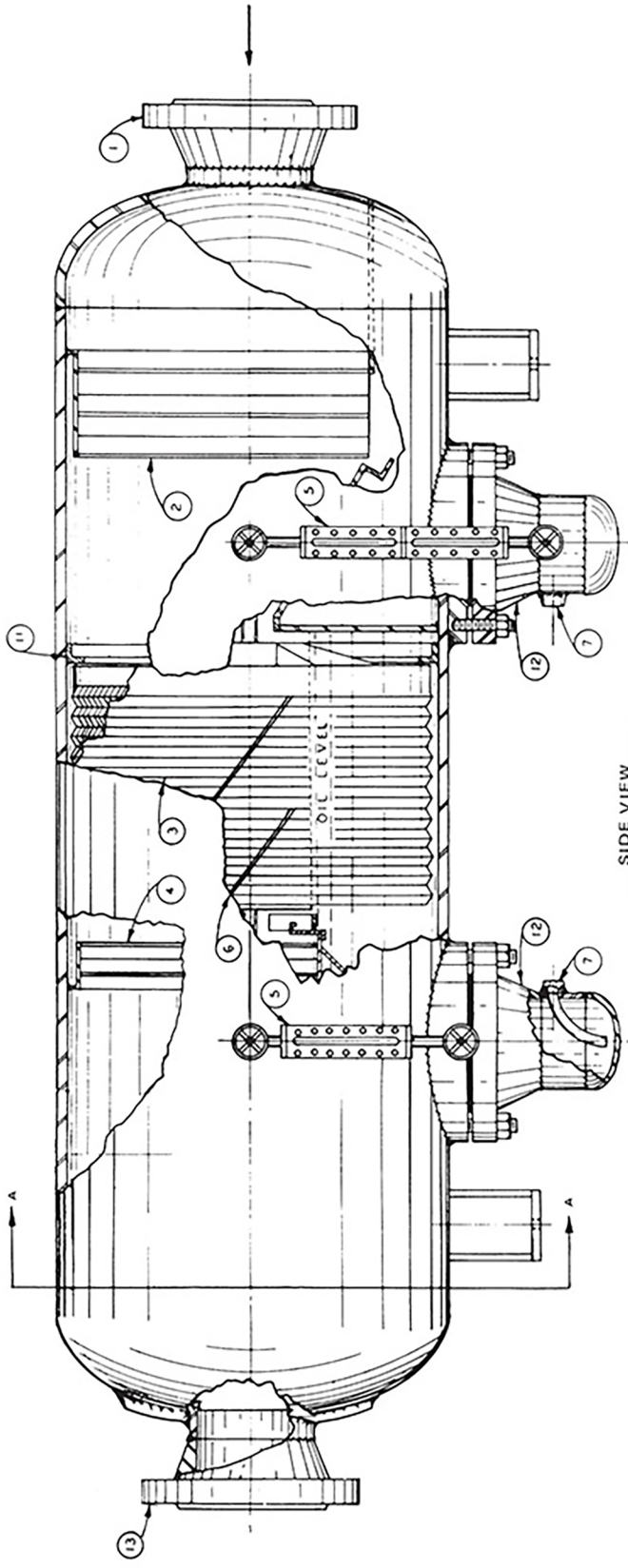


Post Office Box 4639 • Longview, TX 75615
TEL: 903-759-4478 • FAX: 903-759-6781
sales@KingToolCompany.com
www.KingToolCompany.com

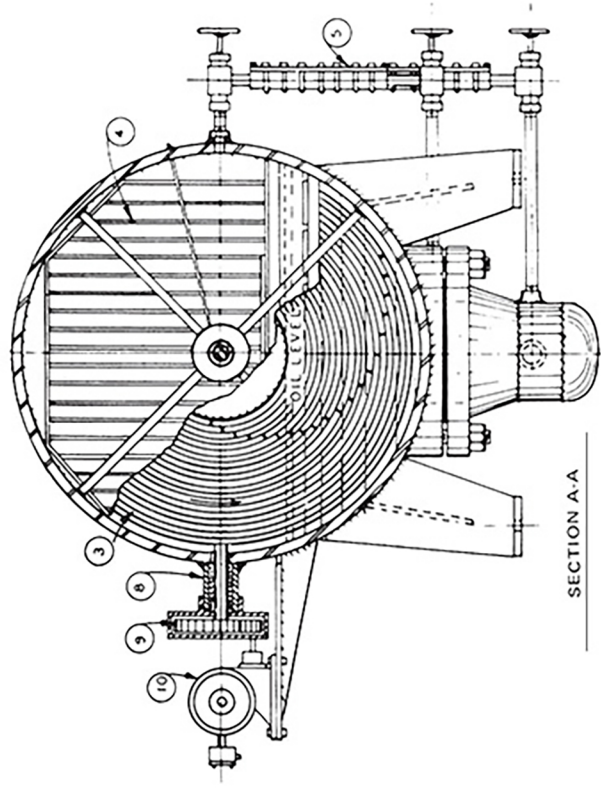


Typical installation where there is excessive liquid knock-out. Note large capacity sump on liquid separation end of vessel.

KINGTOOL GAS SEPARATOR - SCRUBBER



SIDE VIEW



SECTION A-A

IDENT. NO.	DESCRIPTION
1	INLET NOZZLE
2	INLET MIST EXTRACTOR
3	SCRUBING ELEMENT
4	OUTLET MIST EXTRACTOR
5	LIQUID LEVEL GAUGE
6	SCRUBBER SCRAPER BLADE
7	N.P.T. - FILL & DRAIN CONNECTION
8	SCRUBBER SHAFT PACKING GLAND
9	DRIVESHAFT REDUCTION GEARING
10	GEARMOTOR DRIVER EXPL-PROOF, CLASS-1, GROUP-D
11	SCRUBBING ELEMENT SEALER RING
12	SUMP & COVER PLATE (MANWAY ON VESSELS OF 42" DIAMETER & LARGER)
13	OUTLET NOZZLE